

# DENTAL CBCT SCAN

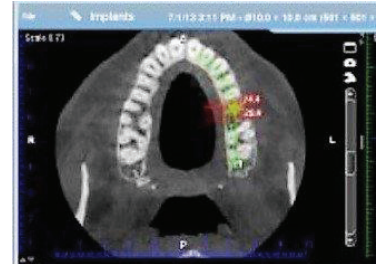
Dental Cone Beam Tomography [Dental CBCT] is a specialized type of x-ray that provides more information than conventional dental or facial x-rays. This computerized scan uses advanced technology to generate three-dimensional[3-D] images.

## Frequently Asked Questions

### 1. What are the benefits of a Dental CBCT scan?

The benefits of a Dental CBCT scan are that it:

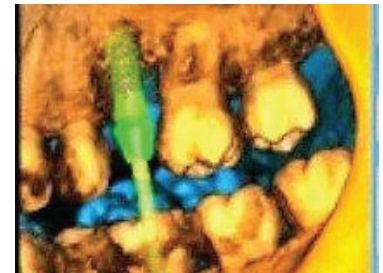
- Provides 3-D images of dental structures, soft tissues, nerve paths and bone which are considerably more detailed than conventional two-dimensional dental x-rays.
- Allows for more precise diagnosis and treatment planning.
- Is simple and comfortable to take and can diagnostically image both bone and soft tissue simultaneously.



### 2. What are the common uses of a Dental CBCT scan?

Dental CBCT scans are commonly used to:

- Evaluate the position of teeth, bone structure, jaw joints and the airway.
- Aid in:
  - Accurate placement of implants
  - Surgical planning for the removal of impacted wisdom teeth
  - 3-D orthodontic evaluation
  - Complex root canal diagnosis and treatment



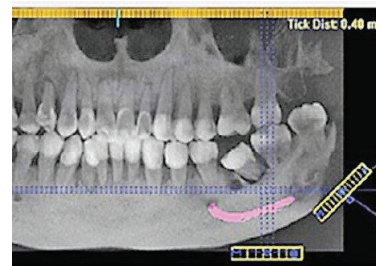
### 3. What are the risks of a Dental CBCT scan?

Although relatively low, Dental CBCT scans cause some exposure to radiation; the amount of exposure is approximately the same as taking a five-hour international plane flight. Due to radiation exposure, scans are not generally recommended for pregnant women and should be used cautiously in the pre-orthodontic evaluation of children.



### 4. How does a Dental CBCT scanning procedure work?

During the scan, a motorized arm rotates 360-degrees around your head while capturing multiple images from different angles that are then reconstructed to create a single 3-D image.



### 5. Who interprets the results of a Dental CBCT scan?

The interpretation of a Dental CBCT scan may be done by your dentist, dental specialist or radiologist.

